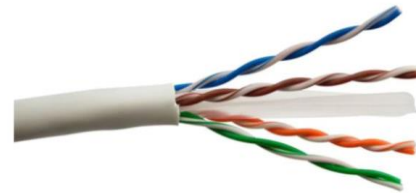
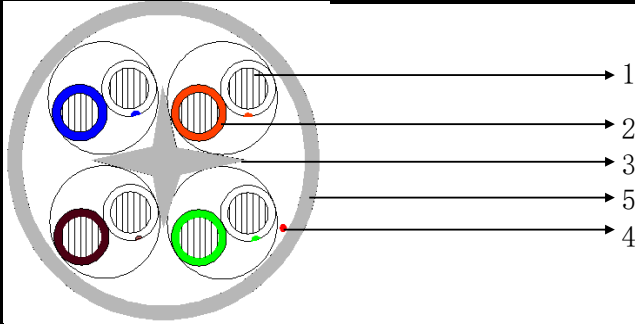


PART NO:UPC-6170E-SOL

TECHNICAL DATA SHEET

DESCRIPTION: CAT6 UTP INDOOR CABLE PVC 100 Ω 250MHZ



CABLE DESCRIPTION

1-CONDUCTOR	PARAMETER	UNIT	VALUE
MATERIAL:SOLID-CCA(8%)	Max.linear tesistance.	Ω/km	≤186.5
DIAMETER:0.57mm±0.008mm	Mutual capacity(nom.)	pF/m	52
AWG:23	Unbalance capacity max (p/p at 1 KHz)	pF/km	1500
2-INSULATION	Characteristic impedance (1 at 250 MHz)	Ω	100±15
TYPE:PE solid	VELOCITY OF PROPAGATION (f > 1MHz)	%of c	72
DIAMETER:0.98mm±0.01mm	Marking		
3-Filler	UPC-6170E-SOL CAT6 UTP LAN		
HDPE 5.0*5.0mm	cable PVC (CCA) solid AWG23/0.57mm CABLEXPRT CE		
4-RIP CORD	ISO/IEC 11801 001M,002M...305M		
YES			
5-OUTER JACKET			
TYPE:PVC			
COLOUR:LIGHT GREY			
THICKNESS:0.55mm			
EXTERNAL DIAMETER:6.5mm±0.5mm			

ELECTRICAL CHARACTERISTICS

Frequency (MHz)	Return loss(dB)	Attenuatin (dB/100m)	NEXT (dB)	PSNEXT (dB)	ELFEXT (dB)	PSELFEXT (dB)
1	20,0	2,00	74,3	72,3	67,8	64,8
4	23,0	3,80	65,3	63,3	55,8	52,8
10	25,0	5,30	59,3	57,3	47,8	44,8
20	25,0	8,50	54,8	52,8	41,8	38,8
62,5	21,5	15,40	47,4	45,4	42,0	29,1
100	20,1	19,80	44,3	42,3	27,8	25,0
150	18,9	24,70	41,7	39,7	24,3	21,3
200	18,0	29,00	39,8	37,8	21,8	19,0
250	17,3	32,80	38,3	36,3	20,4	17,0

OTHER CHARACTERISTICS

MINIMUM BENDING RADIUS:10xDiameter
 WEIGHT:37.2kg/km
 FIRE GRADE:IEC 332-1/CPR Eca
 PACKING:305M PER PULL OUT BOX

NINGBO LCK ELECTRONICS CO.,LTD

Prepared by: David Date: JULY 28,2023 Rev.:1
 Approved by: Sannedy Date:JULY 28,2023 Page1of 1

